

# CERTIFICATE OF LOCATION OF GOVERNMENT CORNER

County of Anoka

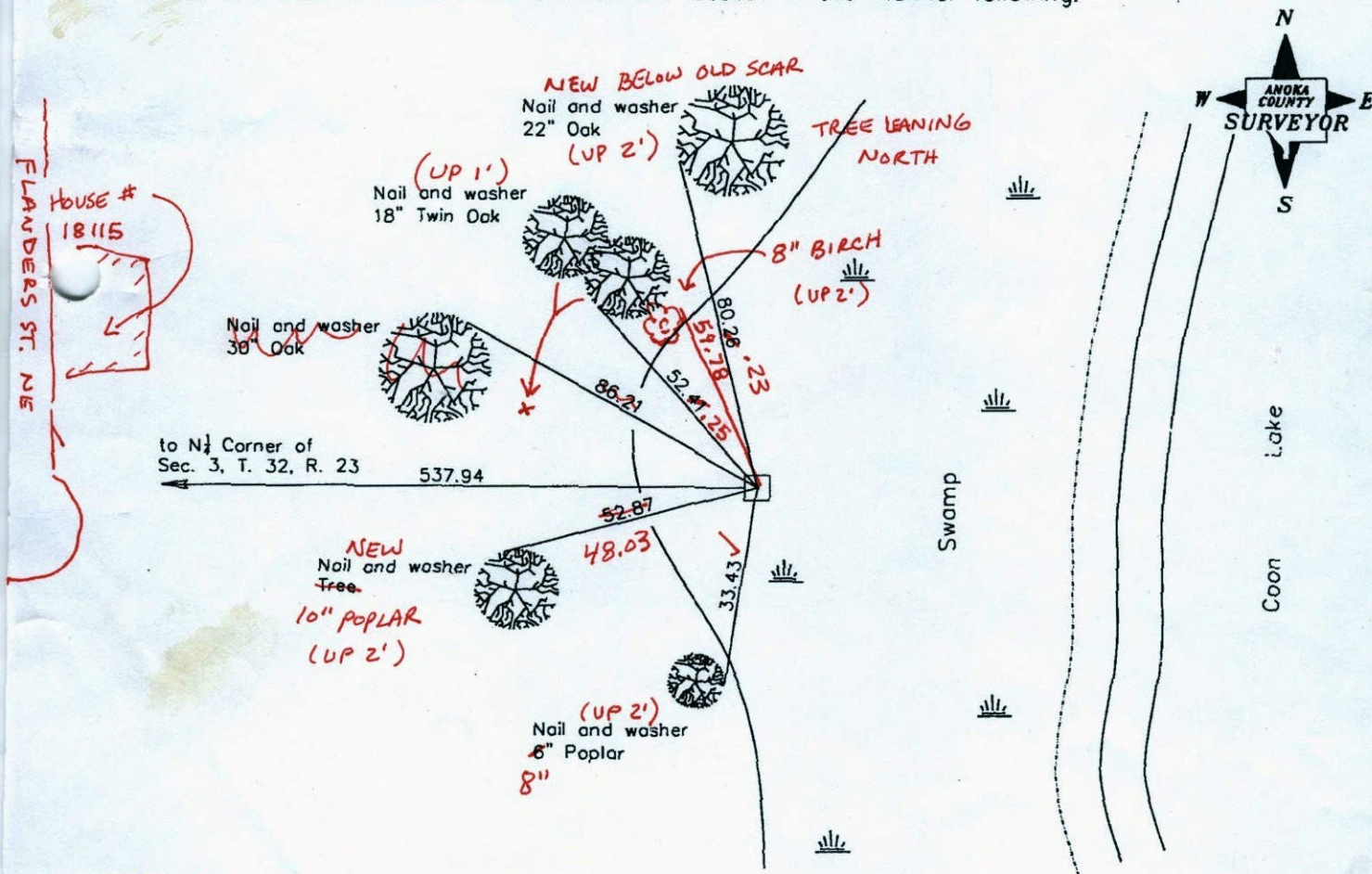
State of Minnesota

Meander Corner of Sec. 3 Township 32 Range 23  
( on west side of Coon Lake)

I hereby certify that on the 20th day of December, 1960, I found the described corner which was evidenced by a concrete monument

and I further certify that to perpetuate the location of said corner, I did, at the exact location thereof, place a permanent marker consisting of a concrete monument ✓ SLIGHTLY LEAVING WEST  
(UP 0.5' ±) "T" POST ON WEST SIDE

which reference or witness monuments are located in the manner following:



HOUSE # 18115  
FLANDERS ST. NE

BK-SS  
TAPED

Revised date

11/15/91
1/30/02
3-17-11

N.A.D. 1983 Coordinates  
(1996 adjustment)

County Project Coordinates	State Plane Coordinates
Northing 195684.8774	Y _____
Easting 519400.1926	X _____

Date 1/30/02



# CERTIFICATE OF LOCATION OF GOVERNMENT CORNER

County of Anoka

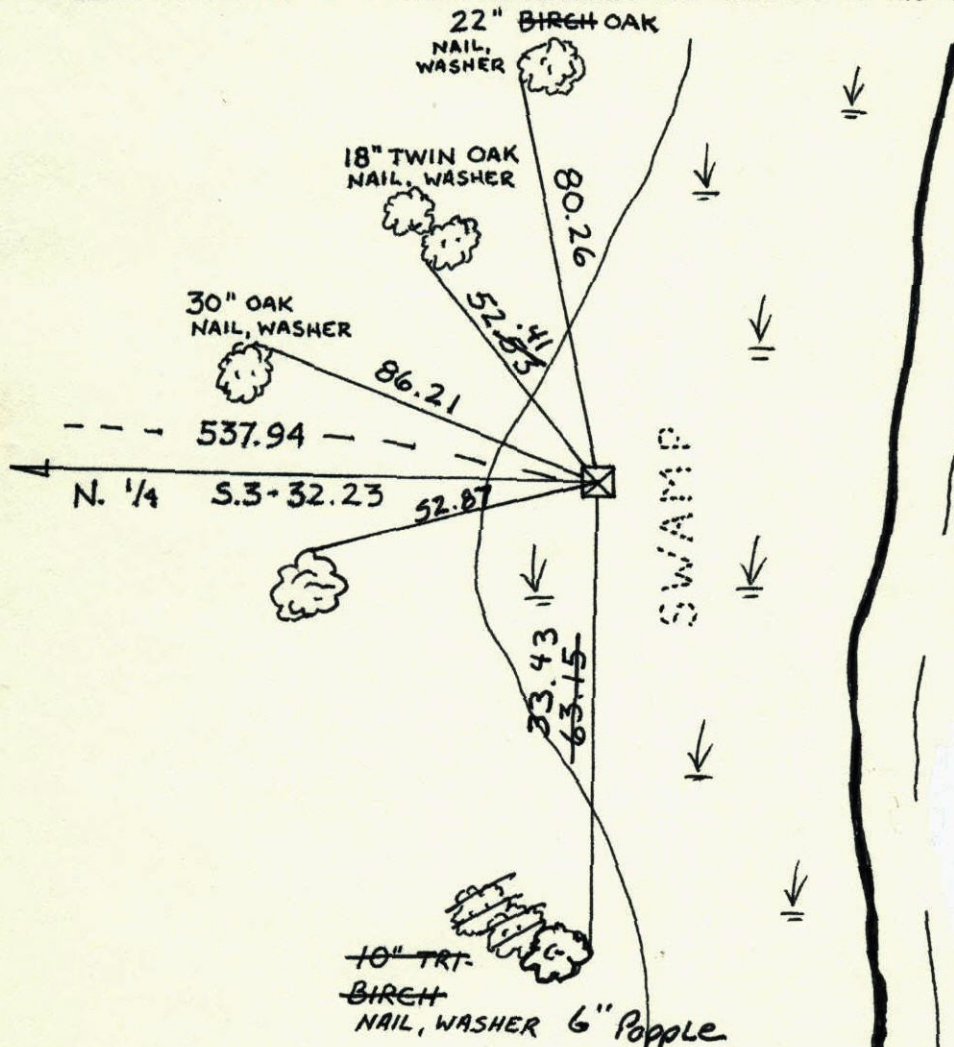
State of Minnesota

MEANDER Corner of Sec. 3 Township 32 Range 23  
W. SIDE COON LAKE

I hereby certify that on the 20 day of DEC., 1960, I found the described corner which was evidenced by CONCRETE

and I further certify that to perpetuate the location of said corner, I did, at the exact location thereof, place a permanent marker consisting of CONCRETE MON.

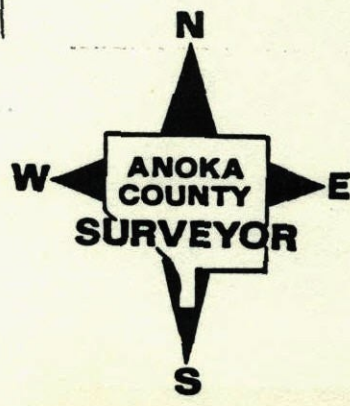
which reference or witness monuments are located in the manner following:



COON LAKE

N.A.D.	1983	Co-ordinates
County	Project	Co-ordinates
Northing		<u>195684.8774</u>
Easting		<u>519400.1926</u>
State Plane Co-ordinates		
Y		_____
X		_____
Date _____		

Revised date	Revised date	Revised date
<u>11-15-91</u>		
<u>1-30-02</u>		



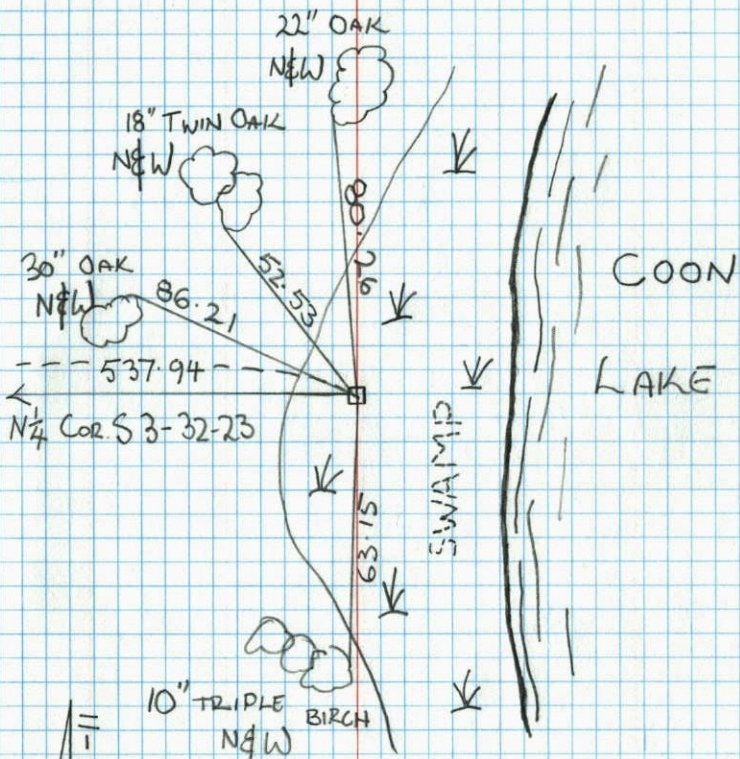


RETIE

MEANDER CORNER SEC 3, T32, R23

WEST SIDE OF COON LAKE

CONCRETE MONUMENT



H. LARSON  
B. KLEMTZ  
M. STEWART



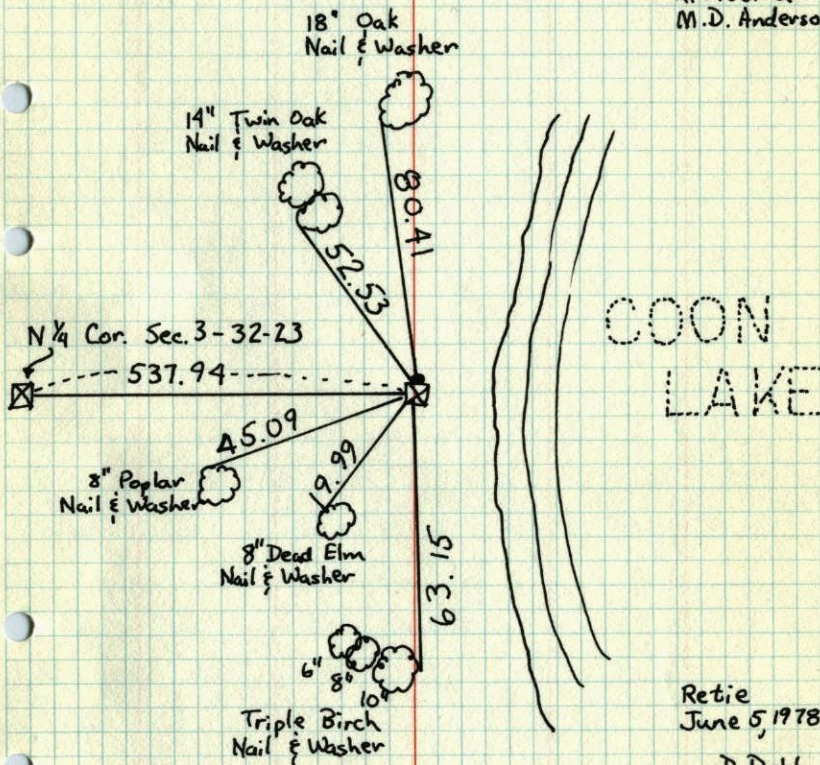
NO. 448 TELEPHONE

M.C. (WEST SIDE COON LAKE) SEC. 3-T.32, R.23

Concrete Mon. up 0.3' - 5.0'± From Water  
Iron Pipe Set on N. Face.

Dec. 20, 1960

R. Freeman  
M.D. Anderson



Retie  
June 5, 1978

D. Dahl  
B. Stephens  
M. Kisrow

TEMPERATURE CORRECTED  
AND HORIZONTALLY  
TAPED MEASUREMENTS

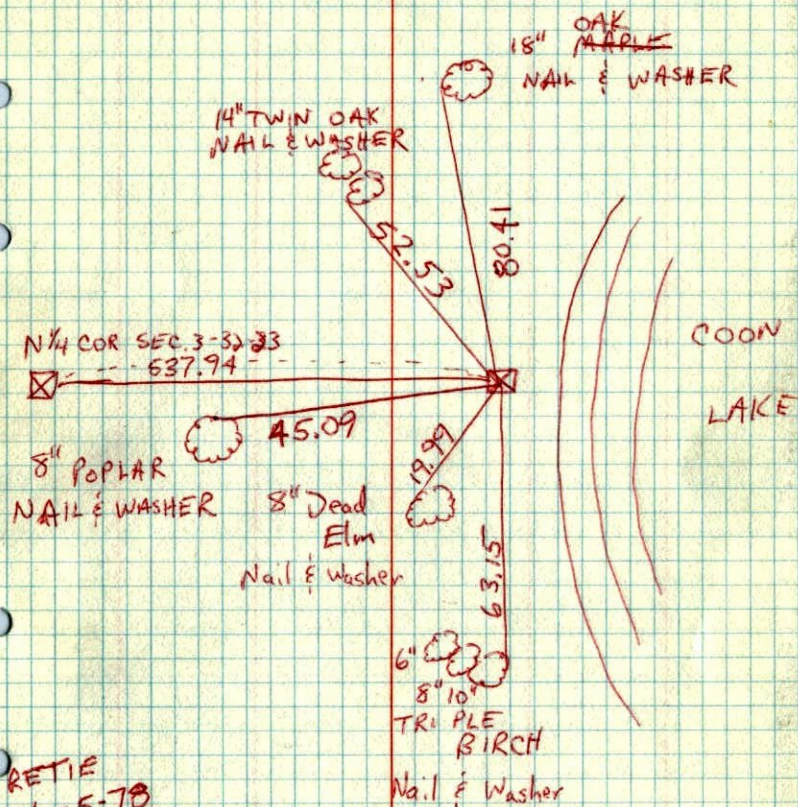
ROLAND W. ANDERSON  
COUNTY SURVEYOR  
ANOKA COUNTY, MINNESOTA



Sec 3 T. 32, R. 23

M.C. (West Side COON LAKE)

CONC. MON. UP 0.3'-0.5' FROM GROUND  
IRON PIPE SET ON N. FACE.



RETIE  
6-5-78  
D. DAHL  
B. STEPHENS  
M. KISROW

SEC. 3-T. 32, R. 23

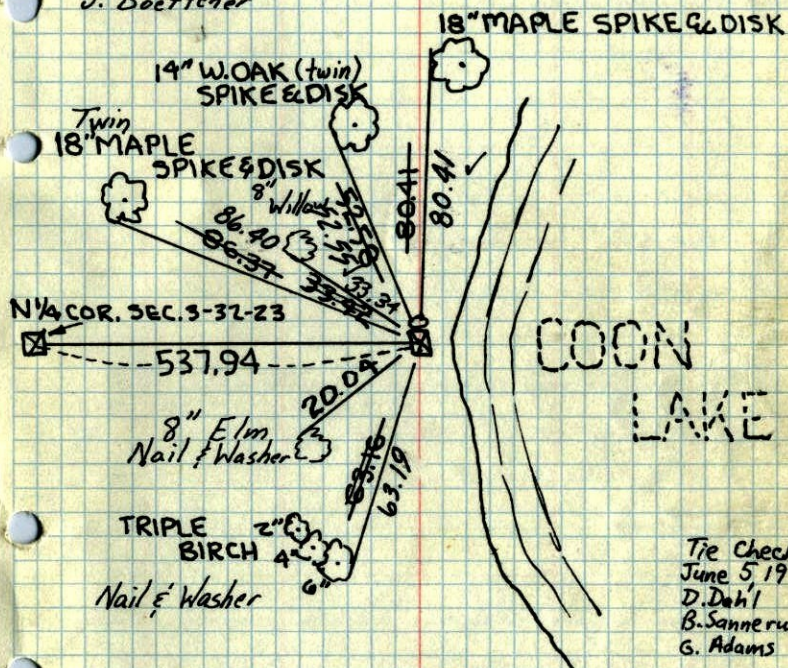
3

M.C. (WEST SIDE COON LAKE) SEC. 3-T. 32-R23

CONC. MON. UP 0.3'-5.0' FROM WATER  
IRON PIPE SET ON N. FACE.

SEE NEW TIE BOOK

Tie Check  
June 4, 1971  
R. Brien  
J. Boettcher



TEMPERATURE CORRECTED  
AND HORIZONTALLY  
TAPED MEASUREMENTS

Tie Check  
July 18, 1966  
B. Rogers  
D. Powell  
J. Berry

DEC. 20, 1960

R. FREEMAN  
M. D. ANDERSON

Retie 7/8/64

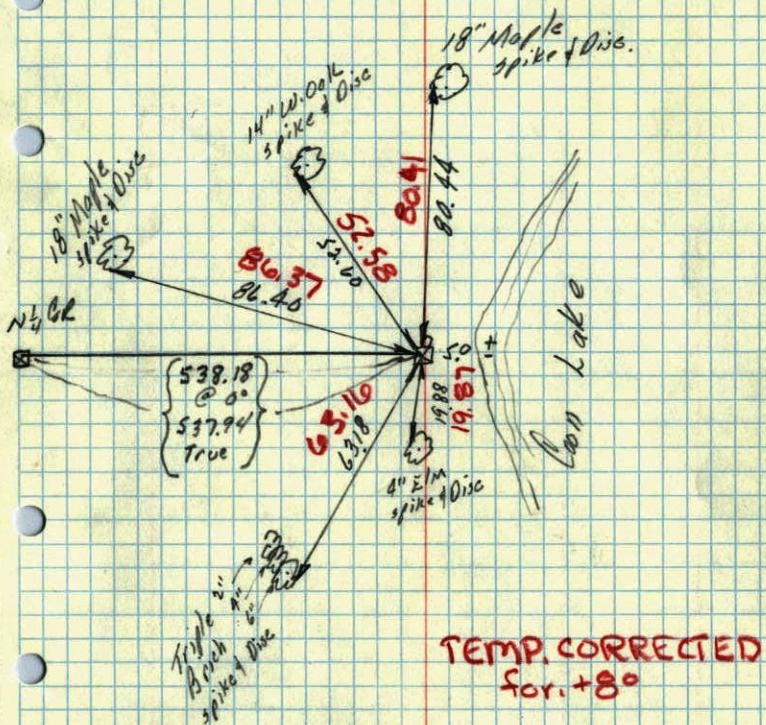
M. D. Anderson  
R. Carlson  
N. Livgard

ROLAND W. ANDERSON  
COUNTY SURVEYOR  
ANOKA COUNTY, MINNESOTA



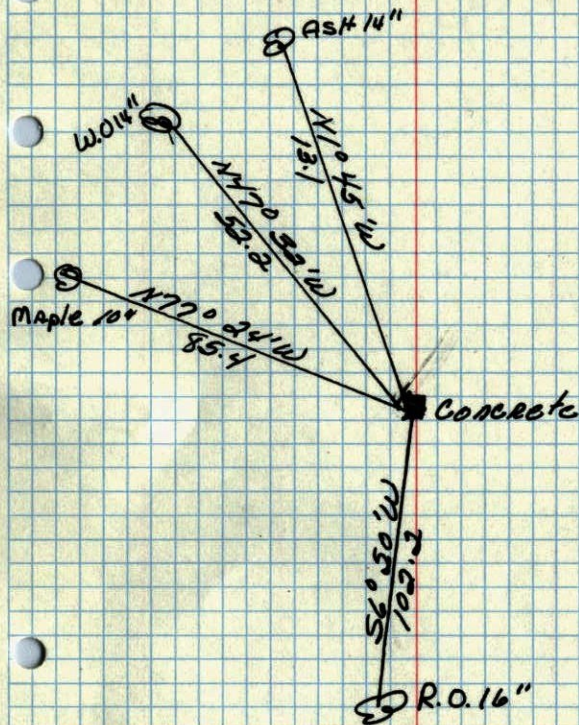
20 Dec 1960  
 Freeman - Skip  
 + 8°

M.C. Cor. (West Side Coon Lake) North Line  
 Sec. 3-32-23 Found Conc. Mon. of 0.3'  
 set from waters Edge. Two of old Tie Trees gone  
 set iron on N face of Mon.



22

M.C. Cor. of N. line of Sec. 31, 32 R23  
 Concrete Mon.  
 (West side of Coon Lake)



Oct. 10, 1944  
 Cartwright